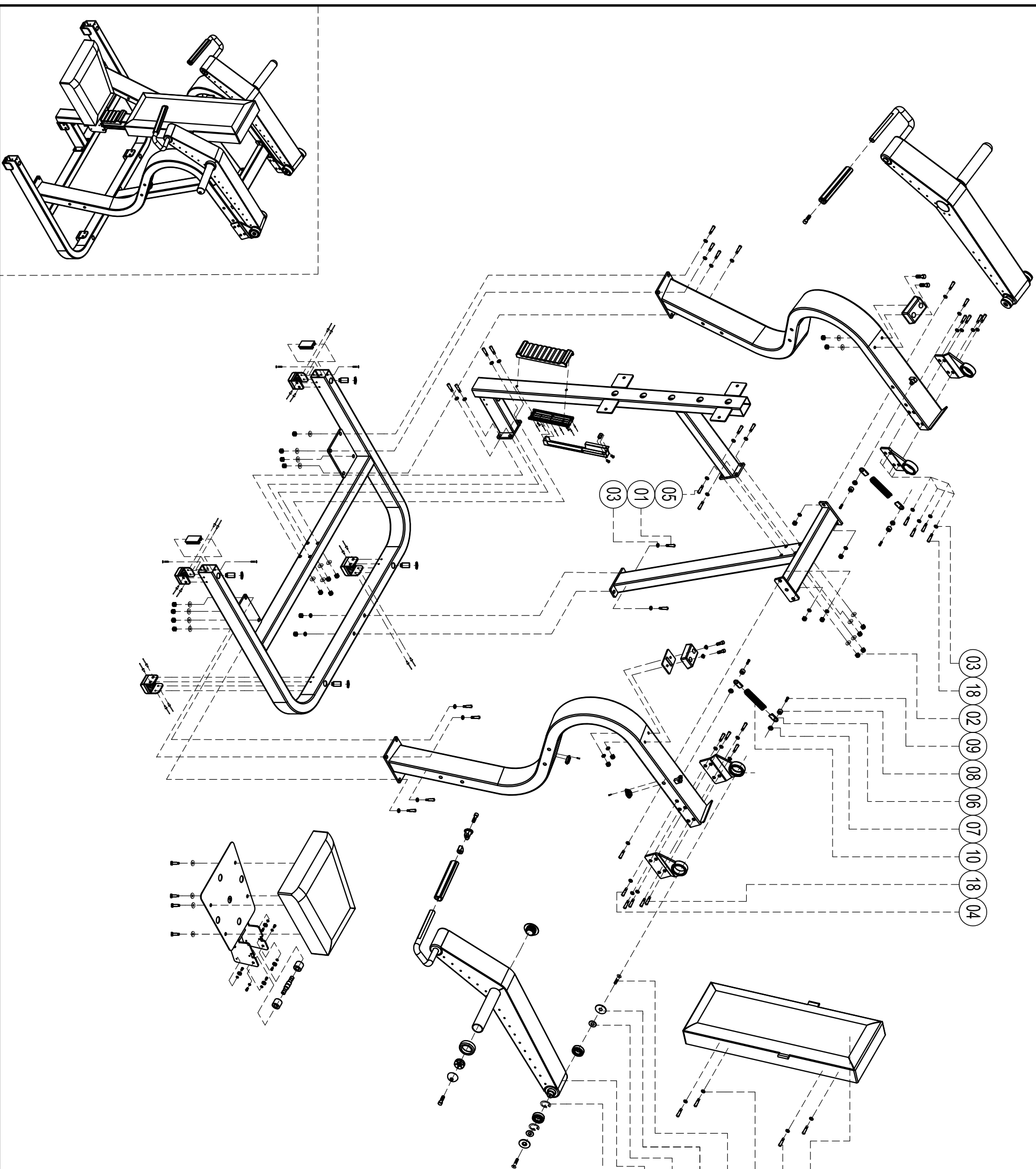


# DHZ-935

## Shoulder Press

please note: parts didnt demitioned part and fasteners not listed on the introduction



19	Movable arm group	2
18	Hex screw M12*30 Countersunk-head inner hex	24
17	screw M10*20	4
16	Small gasket C088φ33*T2.5	4
15	Large gasket C068φ50*T2.5	4
14	Circlip φ52	4
13	Flat washer T1.5*φ10*φ20	4
12	Hex screw M10*30	4
11	Back cushion	1
10	Tension spring TH051	2
09	Cheese head inner hex screw M8*20	4
08	Nylon shaft sleeve S307 Cap-of-countersunk-head	4
07	screw S307	4
06	Director of large spring C079	4
05	Hex screw M12*75	4
04	Hex screw M12*145	4
03	Flat washer T1.5*φ12*φ20	52
02	Hex nut(self-locking)M12	34
01	Hex screw M12*110	2
NO.	Name	Quantity