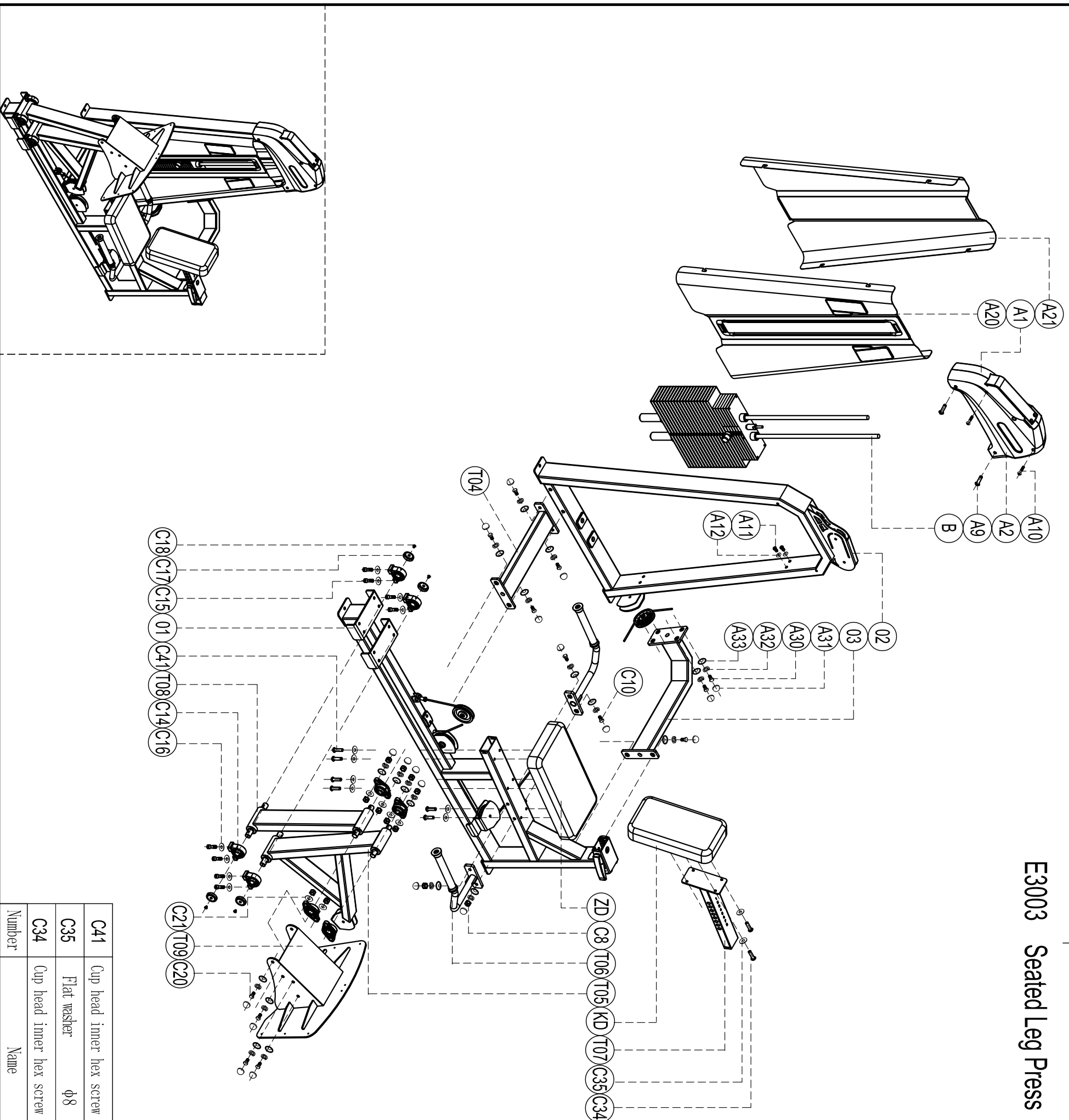


# Exploded

## E3003 Seated Leg Press

please note :prats didn't demotionde part and fast eners not listde on the introduction



Number	Name	Quantity	Number	Name	Quantity
C41	Cup head inner hex screw M8*80	6	03	Top connector	1
C35	Flat washer φ8	10	02	Door frame	1
C34	Cup head inner hex screw M8*35	4	01	Main frame	1

C21	Flat washer φ12	8
C20	Outer hex screw M12*40	8
C19	Bearing basement UCP1205	4
C18	Sink inner hex screw M6*10	4
C17	Cover S264	4
C16	Flat washer φ10	8
C15	Socket Cap inner hex M10*20	8
C14	Bearing basement UCPA1205	4
C10	Outer hex screw M12*140	2
C8	Self lock nut M12	2
B	weight stack set	1
A33	Gasket D0003	10
A32	Spring washer φ12	10
A31	Screw cap S208	10
A30	Outer hex screw M12*35	10
A21	Back shroud HB14	1
A20	Front shroud HB18	1
A12	Flat washer Φ8.3*Φ20*11.5	8
A11	Cup head inner hex screw M8*16	8
A10	Cup head inner hex screw M6*15	4
A9	Cup head cross tapping screw ST5*15	2
A2	Head cover S907	1
A1	Head cover S908	1
KD	Backrest DZ201	2
ZD	Seat	1
T09	Pedal support set	1
T08	Movable arm set	1
T07	Cushione adjustment	1
T06	Handle	2
T05	Back connection set	1
T04	Horizontal connection set	1