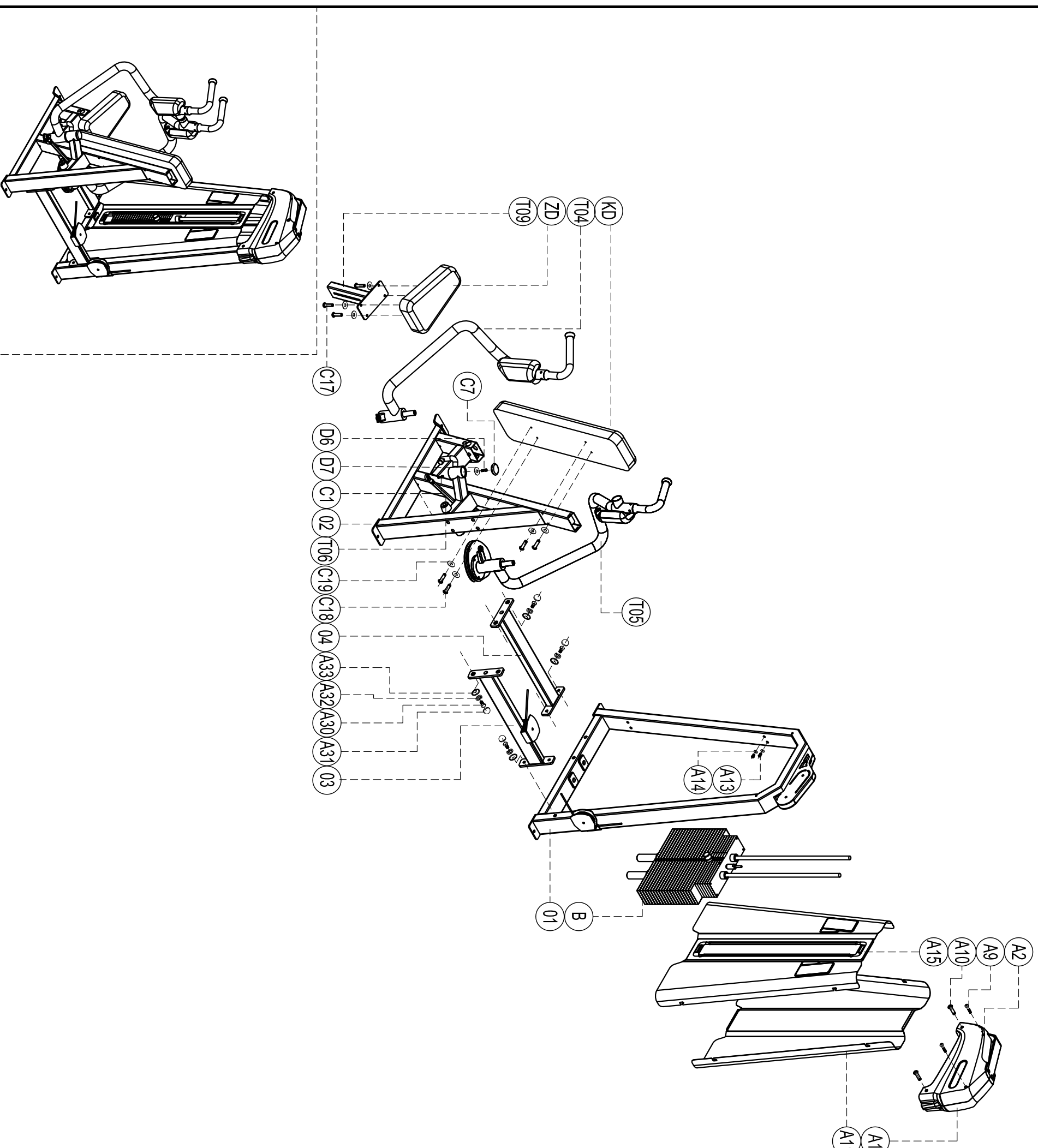


Exploded

E3004 Pectoral Machine

please note :prats didn't demotionde part and fast eners not listde on the introduction



D7	Big flat washer C088	2
D6	Cup hea inner hex screw M10*25	2
C19	Flat washer φ8	8
C18	Cup head inner hex screw M8*80	4
C17	Cup head inner hex screw M8*35	4
C7	Cover	2
C1	Shoulder screw φ10*20	2
B	weight stack set	1
A33	Gasket D0003	8
A32	Spring washer φ12	8
A31	Screw cap S208	8
A30	Outer hex screw M12*35	8
A15	Front shroud HB18	1
A14	flat washer Φ8.3*Φ20*11.5	8
A13	Cup head inner hex screw M8*16	8
A11	Back shroud HB14	1
A10	Cup head inner hex screw M6*15	4
A9	Cup head cross tapping screw S15*15	2
A2	Head cover S907	1
A1	Head cover S908	1
KD	Backrest DZ205	1
ZD	Cushion DZ203	1
T09	Cushion adjustment	1
04	Bottom connector	1
T06	Connector	1
T05	Right arm set	1
T04	Left arm set	1
03	Top connector	1
02	Main frame	1
01	Door frame	1
Number	Name	Quantity