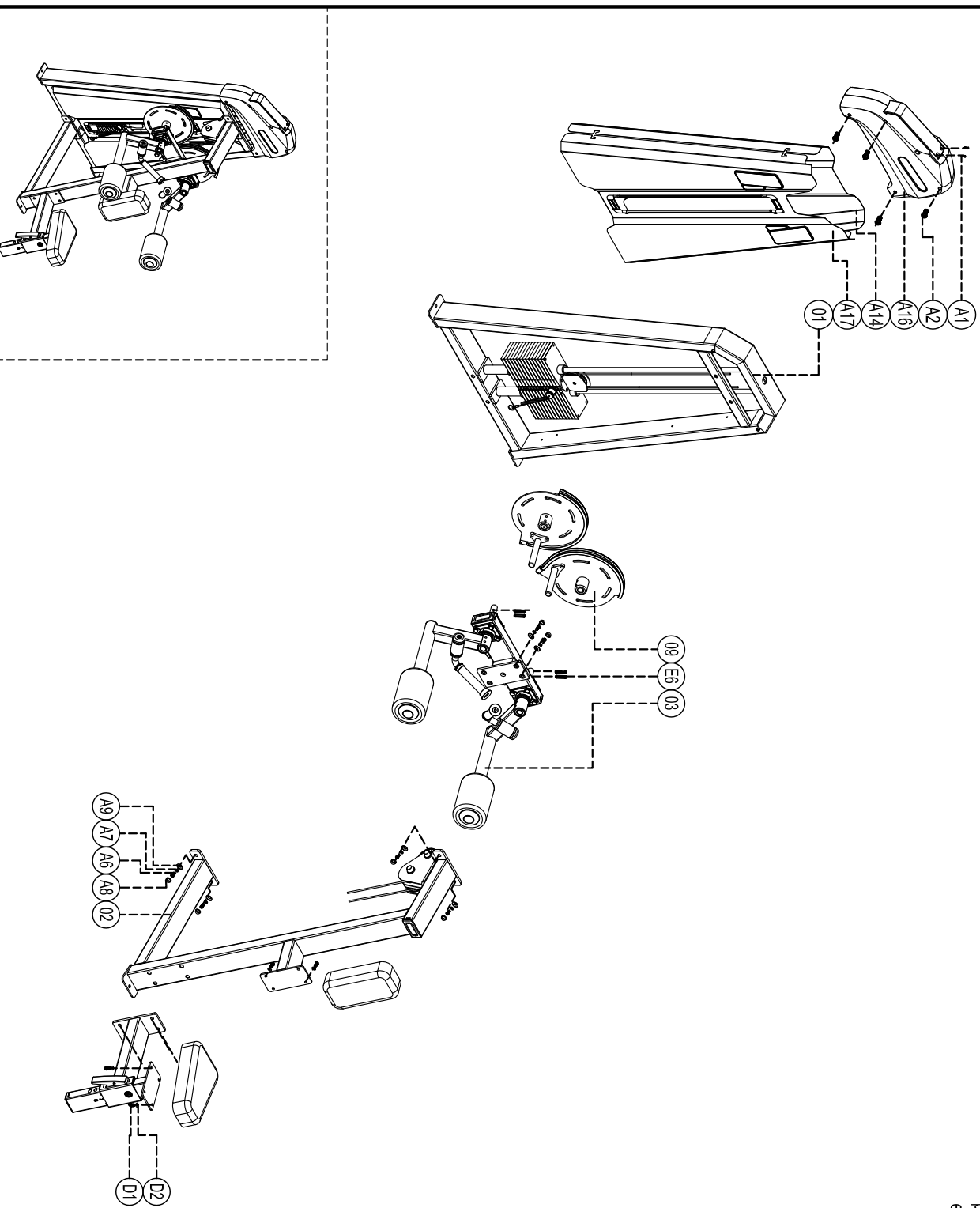


Exploded

E3005 LATERAL RAISE

please note :parts didn't demollitione part and fasteners not listide on the introduction



Number	Name	Quantity
E6	Pin ϕ 8*50	4
D2	Flat washer ϕ 8	8
D1	Cup head inner hex screw M8*35	8
A9	Gasket DQ003 ϕ 29, 8* ϕ 12*14	12
A8	Screw cap S277 ϕ 33*16	12
A7	Spring washer ϕ 12	12
A6	Outer hex screw M12*35	12
A2	Socket head inner hex M6*15	4
A1	Cup head cross tapping screw S15*16	2
O9	Cam sets	2
O3	Working arm	1
D2	Main frame	1
O1	Door frame	1